

USB 2.0 PCI Express CARD

USB Port Features

Compliant with USB specification Revision 2.0

- Fully compliant with PCI Express Base Specification Revision 1.1
- Supports x1 x2 x4 x8 x16 (lane) PCI Express Bus connector key.
- Compliant with EHCI specification Revision 0.95
- Compliant with UHCI specification Revision 1.1
- PCI multi-function device consists of two UHCI Host controllers For full/low-speed (12/1.5Mbps) signaling and one EHCI Host Controller core for high-speed signaling.
- 4 downstream facing ports in the root hub with integrated physical layer transceivers shared by UHCI and EHCI Host controllers

System Requirements

This USB card is made exclusively for the IBM-PC or compatible line of computer. If you are not sure what type of computer you have, check your system documentation for compatibility.

Package Contents

This PCI Express USB 2.0 Card package includes the following:

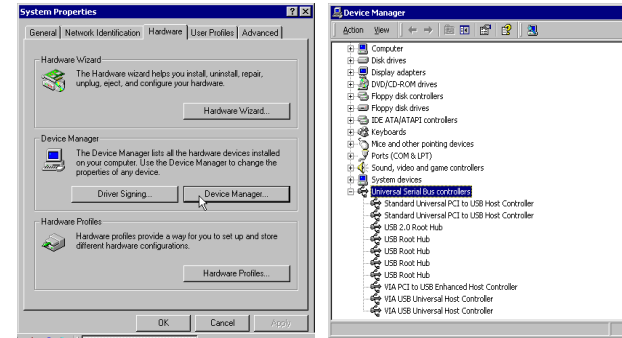
- Installation Guide • PCI Express USB 2.0 Card • Driver CD

Software:

- Windows® 2000 SP4 /XP driver CD ROM or (Pentium® IV)VISTA
- At present, more than 2000 SP4 and above OS can be used Built-in driver

Windows 2000 Driver installation

1. At the Add New Hardware Wizard windows®, click on “Next”
2. Select the option “**Search for the best driver for your devices (Recommend)**” and click on “Next”
3. Select the option “**Specify the location**” and type in **D(CDROM):\SETUP.EXE** then click on “Next”
4. Click “Next” and then “Finish” respectively.
5. Remove the diskette, then select “Yes” to restart the computer for the setup to take effect

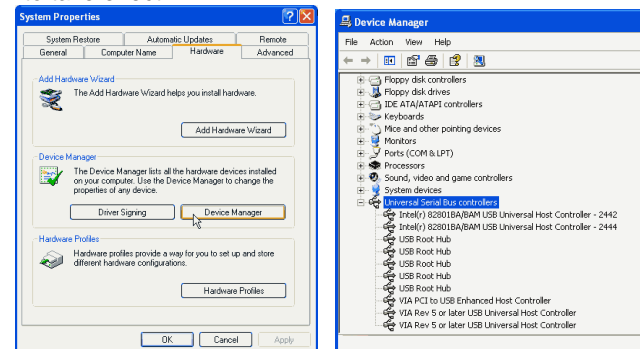


To verify successful installation in Windows® 2000:

1. From the main desktop, click on “My Computer”, then double-click on “Control Panel, System”, and “Device Manager”.
2. Double-click on either “Universal Serial Bus controllers” options “USB 2.0 Root Hub device” or “VIA Tech PCI to USB Universal Host Controller” should be displayed when successfully installed. The port is ready to connect new device.

Windows XP Driver installation

1. At the Add New Hardware Wizard windows®, click on “Next”
2. Select the option “**Search for the best driver for your devices (Recommend)**” and click on “Next”
3. Select the option “**Specify the location**” and type in **D (CDROM):\SETUP.EXE** then click on “Next”
4. Click “Next” and then “Finish” respectively.
5. Remove the diskette, then select “Yes” to restart the computer for the setup to take effect

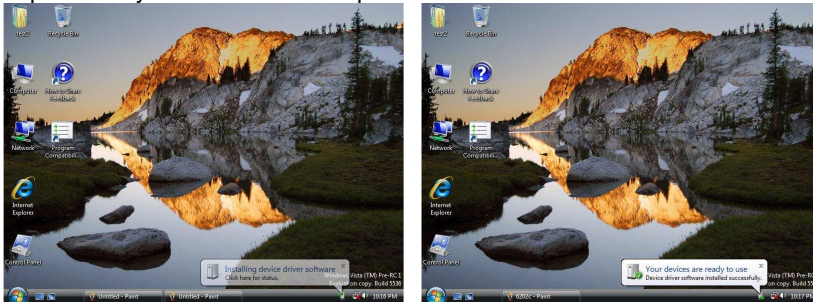


To verify successful installation in Windows® XP:

1. From the main desktop, click on “**My Computer**”, then double-click on “**View System information**”, and “**Hardware**” to “**Device Manager**”.
2. Double-click on either “**Universal Serial Bus controllers**” options “**USB 2.0 Hoot Hub device**” or “**VIA Tech PCI to USB Universal Host Controller**” should be displayed when successfully installed. The port is ready to connect new device.

Windows Vista Driver Installation:

1. Start power to RUN VISTA
2. Windows will automatically detect you have a new device the first time you power on your PC and thus request the devices software drivers.



3. Detect you have device to Install device software
4. Install the driver “**your device are ready to use**”
5. Chick “**Device Manager**” to “**Universal Serial Bus Controllers**” and the “**VIA Rev 5 or later USB Universal Host Controller**” & “**VIA USB Enhanced Host Controller**” should be displayed when successfully installed. The port is ready to connect new device.

