



6x2 HDMI 2.0 18G Matrix Switch

User Manual
Benutzerhandbuch
Manuel Utilisateur
Manuale

English
Deutsch
Français
Italiano



No. 38162

lindy.com



Tested to comply with
FCC Standards
For Home and Office Use!

Introduction

Thank you for purchasing the Lindy 6x2 HDMI 2.0 18G Matrix Switch. This product has been designed to provide trouble free, reliable operation. It benefits from both a Lindy 2 year warranty and free lifetime technical support. To ensure correct use, please read this manual carefully and retain it for future reference.

Package Contents

- 6x2 HDMI 2.0 18G Matrix Switch
- Country specific IEC mains cable
- Matrix IR Extension Cable
- 6 x TX IR Extension Cables
- 2 x RX IR Extension Cables
- Rack mounting brackets & screws
- IR Remote control including CR2025 battery
- Quick Install Guide

Features

- HDMI 2.0, HDCP 2.2, DVI 1.0 compliant
- Resolutions up to 4096x2160@60Hz 4:4:4 8bit
- Full 18G bandwidth and 600Mhz TMDS
- Supports 7.1 channel of LPCM, Dolby TrueHD and DTS-HD Master Audio digital audio signals
- RS232, IR remote control & IP control for switching

Specification

- Input Ports: 6 x HDMI (Female), RJ45 (Female), RS232 (Female), 3.5mm IR Ext (Female), 6 x TX IR ports (Female)
- Output Ports: 2 x HDMI (Female), 2 x RX IR ports (Female)
- Dimensions: 440x198x43mm (17.32x7.8x1.69in)
- Operating temperature: 0°C - 40°C (32°F - 104°F)
- Storage temperature: -20°C - 60°C (-4°F - 140°F)
- Relative humidity: 20% – 90% RH (non-condensing)
- Power Consumption: 60W Max, 1.2W standby

Installation

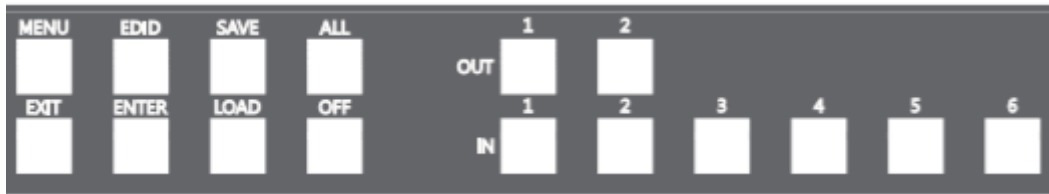
Please ensure all devices are switched off before making any connections.

Connect the source devices such as a PC, Blu-ray player or games console to the HDMI matrix input ports. Then connect the high definition displays to the HDMI matrix output ports. When all the connections are made, connect the power supplies.

Once all the connections have been made, switch on the devices in this order: displays, HDMI Matrix, source devices. Please allow a few minutes for the devices to handshake and for the signals to appear.

Operation

Front Panel



OUT 1-2: Select the HDMI output signal

IN 1-6: Select the HDMI input signal

MENU: Display the ID, IP Address, in/out port link and firmware version information

EDID:

- UHD Mode: Set the supported resolution to Ultra HD 4K60
- OUT 1 Mode: Copy output 1 EDID to all input channels
- FHD Mode: Set the supported resolution to Full HD 1080p
- 4K30 Mode: Set the supported resolution to 4K30

SAVE: Save up to 4 sets of input/output configurations

ALL: Set a single input port to all output ports

- Press the ALL key
- Select an IN port
- The selected IN port will be displayed on both OUT ports
- To disable all the displayed settings, press ALL then OFF

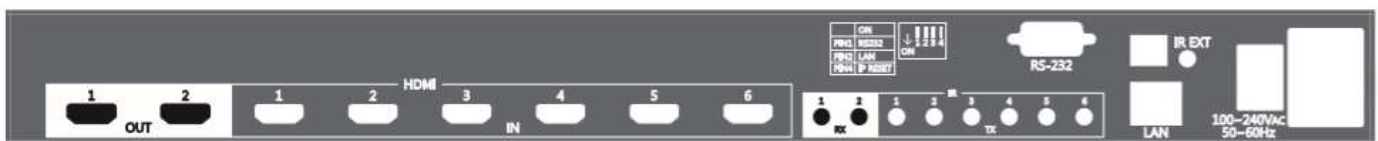
OFF: Disables the LCD backlight

LOAD: Load the settings saved in the preset

ENTER: Confirms any settings

EXIT: Press to go back to the main screen

Rear Panel



POWER PORT: Connect the power cord to this port

POWER SWITCH: Power on/off

RS232 PORT: Connect to a computer with a 9 pin serial cable to control the matrix remotely

LAN PORT: Connect to a computer with an RJ45 cable to control the matrix remotely

IR EXT PORT: Connect the included IR extension cable to extend the receiver by approx. 2m

IR MATRIX PORTS: Connect the included IR extension ports to extend the distance of the IR transmitters and receivers

HDMI IN PORTS: Connect your HDMI source devices to these ports

HDMI OUT PORTS: Connect your HDMI displays to these ports

DIP SWITCHES:

- PIN1: Switch RS232 port connection
- PIN 2: Switch LAN port connection
- PIN 3: Reserved
- PIN 4: Reset the IP address to factory default. (Default: 192.168.0.3)
 1. With the matrix powered on, set Pin 1 to ON and wait 10 seconds.
 2. Power the matrix off with the rear switch, and wait 10 seconds.
 3. Power the matrix back on and again wait 10 seconds before setting Pin 4 to OFF.
 4. The matrix will now be factory reset. (Default IP: 192.168.0.3)

RS232 Configuration

Follow these steps to log in to the matrix using RS232, starting with all devices switched off.

1. Set pin 1 to ON
2. Make sure the computer and the matrix are connected using a serial cable
3. Power on the matrix then the computer
4. Launch a terminal emulation programme (e.g. HyperTerminal) on your computer
5. Input the connection name and select a representative icon then click OK
6. Select the connecting port you want to use and click OK (default: COM1)
7. Set parameters to the options displayed below:

Description	IP Address / Port
Baud Rate	115200
Data Bits	8
Parity	None
Stop bits	1
Flow Control	None

Note: the RS232 connector is defined by DCE, only TXD, RXD and GND pins are used.

Network Configuration

The matrix supports IP based control using Telnet, TCP or the built in web server. The network settings can be configured via web or Telnet command. The default network settings are as below:

Description	IP Address / Port
IP Address	192.168.0.3
Subnet Mask	255.255.255.0
Gateway	192.168.0.1
DNS Server	8.8.8.8
DHCP Client	Disable
TCP Port	5000
Telnet Port	23
HTTP Port	80

Note: Depending upon your network, all related IP, Telnet and TCP settings will need to be assigned. Consult your network administrator to obtain the correct settings.

Telnet Configuration

To operate and configure the matrix using telnet follow these steps:

1. Set pin 2 to ON
2. Make sure the computer and the matrix are connected using an RJ45 cable
3. Power on the matrix then the computer
4. Launch a terminal session (command line) on your computer
5. Enter "telnet" followed by the matrix IP address then 23: telnet (IP Address) 23
6. Press enter

Note: Telnet port is 23

TCP Configuration

For programmer's familiar with network communication, you can programme your own TCP/IP application to control the matrix

Note: TCP port is 5000

RS232 and TCP/IP Console Command

Control is based on ASCII code for RS232, Telnet and TCP interfaces. Every command must include a carriage return (0d) to execute the command. If a new command is received, a prompt should be sent back.

1. Command List

Once the connection with the matrix is established, type "help" in the hyper terminal screen and then press "enter" to show the command list:

Command	Description
help	Display help information
reset	Reset the device
info	Display device information
r	Set the routing status
rs	Display the routing status
save	Save the current setting to preset
load	Load settings from preset
edid	Select input EDID mode
default	Reset to factory default settings

For more information type "/h" or "?" after each command.

2. Command usage description

- command "r"

- r x y: Set Input x to Output y
- r x: Set all Outputs to Input x
- r: Displays the current route status
- r x y1 .. yn: Set Input x to Output y1, .. , yn

x = [0-1] (0: disable), y = [0-n] (0: all outputs)

Example: r 1 2

Example: r 0

- command "rs"

- rs: Displays the current route status
- rs x: Displays the Preset x route status
- rs x y: Displays the Preset x Output y route status

x = [0-0] (0: current status)

y = [0-4] (0: all outputs)

Example: rs

Example: rs 0

- command "save"
save x: Save current route status to Preset x
x = [1-4] (Preset Position x)

Example: save 1

- command "load"
load x: Load the route status from Preset x
x = [1-4] (Preset Position x)

Example: load 1

- command "edid"
edid x: Select input EDID mode x
x = [0-3] 0: Ultra HD
1: Copy from Output 1
2: Full HD
3: 4K30

Example: edid 0

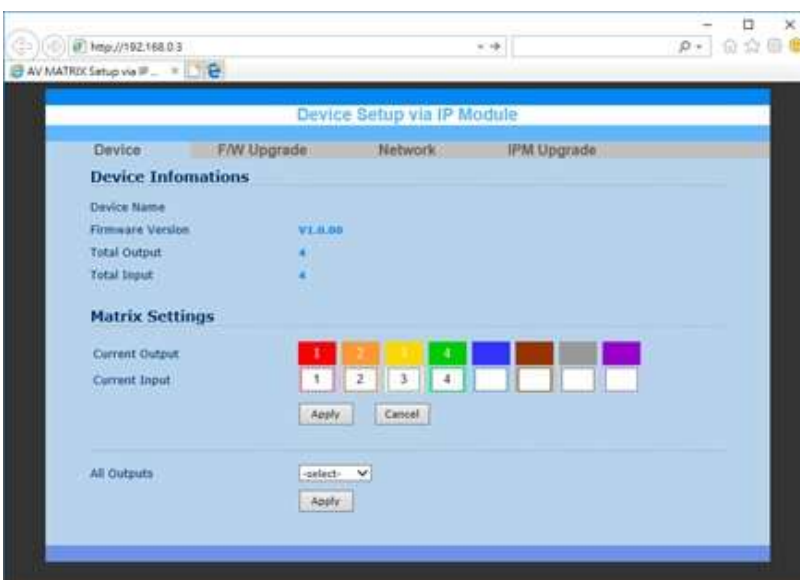
Other commands have no parameters.

3. TCP/IP Configuration (Telnet Console Only)

ipconfig: Display the TCP/IP configuration
setip: Renew the IP address
setmask: Renew the subnet mask
setgateway: Renew the default gateway
setdns: Renew the DNS servers
setdhcp: Set the DHCP client, enable or disable

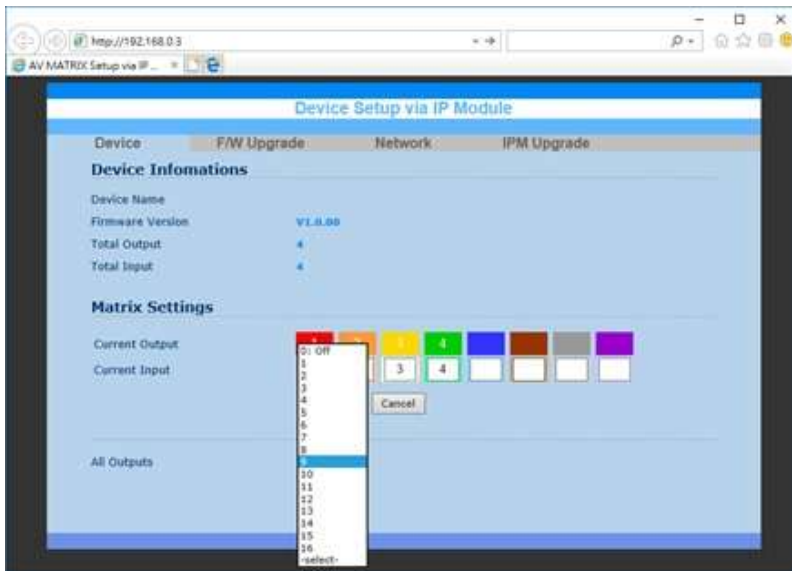
Web Control

1. Open a web browser on your computer and enter the default IP address HTTP://192.168.0.3 to connect to the IPM web.



Note: HTTP proxy is 80

2. Key in the port numbers in the "input" fields and click "Apply".
3. To select all outputs to have the same signal, click on "select" and chose from the drop down.



Please note: After changing **ANY** IP settings within the web GUI, please turn off the matrix for a minimum of 10 seconds to ensure settings have taken effect

CE/FCC Statement

CE Certification

This equipment complies with the requirements relating to Electromagnetic Compatibility Standards. It has been manufactured under the scope of RoHS compliance.

CE Konformitätserklärung

Dieses Produkt entspricht den einschlägigen EMV Richtlinien der EU für IT-Equipment und darf nur zusammen mit abgeschirmten Kabeln verwendet werden.

Diese Geräte wurden unter Berücksichtigung der RoHS Vorgaben hergestellt.

Die formelle Konformitätserklärung können wir Ihnen auf Anforderung zur Verfügung stellen

FCC Certification

This equipment has been tested and found to comply with the limits for a Class B digital device, pursuant to part 15 of the FCC Rules. These limits are designed to provide reasonable protection against harmful interference in a residential installation.

You are cautioned that changes or modification not expressly approved by the party responsible for compliance could void your authority to operate the equipment.

This device complies with part 15 of the FCC Rules.

Operation is subject to the following two conditions:

1. This device may not cause harmful interference, and
2. This device must accept any interference received, including interference that may cause undesired operation.

LINDY Herstellergarantie – Hinweis für Kunden in Deutschland

LINDY gewährt für dieses Produkt über die gesetzliche Regelung in Deutschland hinaus eine zweijährige Herstellergarantie ab Kaufdatum. Die detaillierten Bedingungen dieser Garantie finden Sie auf der LINDY Website aufgelistet bei den AGBs.

Hersteller / Manufacturer (EU):

LINDY-Elektronik GmbH
Markircher Str. 20
68229 Mannheim
GERMANY
Email: info@lindy.com , T: +49 (0)621 470050

LINDY Electronics Ltd
Sadler Forster Way
Stockton-on-Tees, TS17 9JY
United Kingdom
postmaster@lindy.co.uk , T: +44 (0)1642 754000

Recycling Information



WEEE (Waste of Electrical and Electronic Equipment), Recycling of Electronic Products

Europe, United Kingdom

In 2006 the European Union introduced regulations (WEEE) for the collection and recycling of all waste electrical and electronic equipment. It is no longer allowable to simply throw away electrical and electronic equipment. Instead, these products must enter the recycling process.

Each individual EU member state has implemented the WEEE regulations into national law in slightly different ways. Please follow your national law when you want to dispose of any electrical or electronic products. More details can be obtained from your national WEEE recycling agency.

Battery Remark:

Do not put empty batteries in your domestic waste bin as they will not be recycled. Empty batteries can be returned for recycling at our trade counter or at your local household recycling centre.

The raw materials enclosed in batteries such as Zinc, Iron and Nickel can be reused to a very large proportion. The recycling of batteries and disused/obsolete electronic equipment is one of the most efficient environment protection actions you can easily take.

Germany / Deutschland

Rücknahme Elektroschrott und Batterie-Entsorgung

Die Europäische Union hat mit der WEEE Richtlinie Regelungen für die Verschrottung und das Recycling von Elektro- und Elektronikprodukten geschaffen. Diese wurden im Elektro- und Elektronikgerätegesetz – ElektroG in deutsches Recht umgesetzt. Das Entsorgen von Elektro- und Elektronikgeräten über die Hausmülltonne ist verboten! Diese Geräte müssen den Sammel- und Rückgabesystemen zugeführt werden! Dort werden sie kostenlos entgegen genommen. Die Kosten für den weiteren Recyclingprozess übernehmen die Gerätehersteller.

LINDY bietet deutschen Endverbrauchern ein kostenloses Rücknahmesystem an, beachten Sie bitte, dass Batterien und Akkus den Produkten vor der Rückgabe an das Rücknahmesystem entnommen werden müssen und über die Sammel- und Rückgabesysteme für Batterien separat entsorgt werden müssen. Ausführliche Informationen zu diesen Themen finden Sie stets aktuell auf der LINDY Webseite im Fußbereich.

France

En 2006, l'union Européenne a introduit la nouvelle réglementation (DEEE) pour le recyclage de tout équipement électrique et électronique.

Chaque Etat membre de l' Union Européenne a mis en application la nouvelle réglementation DEEE de manières légèrement différentes. Veuillez suivre le décret d'application correspondant à l'élimination des déchets électriques ou électroniques de votre pays.

Remarque sur les piles et batteries

En tant que consommateur final, vous êtes tenus de restituer toutes les piles et batteries usagées. Il est clairement interdit de les jeter avec les ordures ménagères ! Les piles et batteries contenant des substances nocives sont marquées par le symbole ci-dessus. Vous pouvez déposer gratuitement vos piles ou batteries usagées dans les centres de collecte de votre commune, dans nos succursales ou dans tous les points de vente de piles ou batteries. Vous respecterez ainsi la loi et contribuerez à la protection de l'environnement !

Italy

Nel 2006 l'unione europea ha introdotto regolamentazioni (WEEE) per la raccolta e il riciclo di apparecchi elettrici ed elettronici. Non è più consentito semplicemente gettare queste apparecchiature, devono essere riciclate. Ogni stato membro dell' EU ha tramutato le direttive WEEE in leggi statali in varie misure. Fare riferimento alle leggi del proprio Stato quando si dispone di un apparecchio elettrico o elettronico.

Per ulteriori dettagli fare riferimento alla direttiva WEEE sul riciclaggio del proprio Stato.



LINDY No 38162

lindy.com