

# LINDY®

**CONNECTION PERFECTION**

---

## **Compact 2 Port USB KM Switch**

**User Guide**

*English*

---



**LINDY No. 32162**

**[www.lindy.com](http://www.lindy.com)**

---



**INTRODUCTION**

The LINDY 2 Port USB KM Switch allows a user to control two computers and associated display screens with a single USB keyboard and mouse. The switching function may be performed with keyboard hotkeys, mouse buttons or by installing the supplied screen cursor control software allowing seamless navigation between both computers without any time lag.

**FEATURES**

The LINDY 2 Port USB KM Switch allows a user to view and access one computer while also allowing the user to view the other "non-accessed" computer. You can use keyboard hot keys and mouse buttons to switch between your computers. \*The KM Switch features unique screen cursor control software which tracks the location of the on screen cursor and automatically switches control of the keyboard and mouse to the second computer when the cursor is moved off the screen.

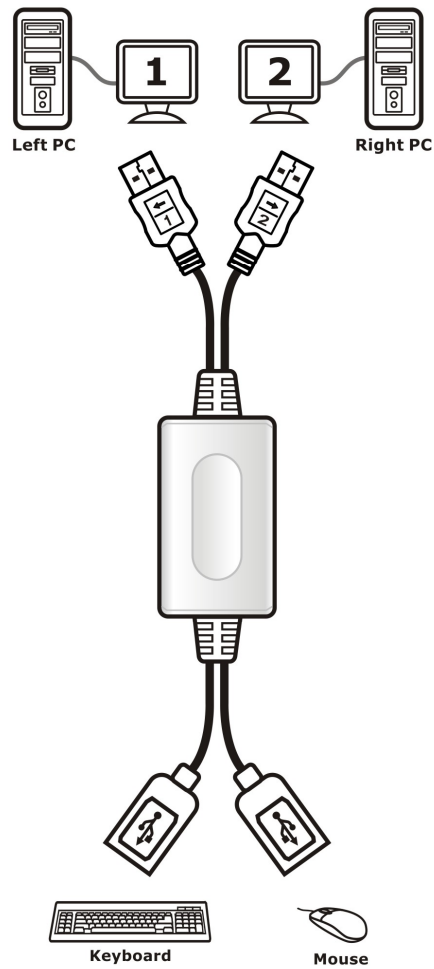
**\*You need to install the provided software to enable this feature.**

**SPECIFICATIONS**

<b>Host Interface</b>	USB 2.0
<b>PC Port</b>	USB A-Type (M) Cable x 2 (1.2m), USB 1.1/2.0 compatible
<b>USB Device Port</b>	USB A-Type (F) Cable x 2 (10cm)
<b>Operating System Support</b>	Windows 2K SP4, XP SP2, Vista 32-bit/-64bit, Mac OS 10.3
<b>Compatible USB Device</b>	Standard keyboard and mouse
<b>Power Mode</b>	Bus Power
<b>Dimension</b>	Main body without cables: 50 (L) x 25 (W) x 13 (H) mm
<b>Power Consumption</b>	5V / 105mA (Maximum)

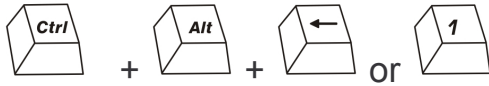
**Hardware Installation**

Simply connect the USB KM switch to your computers USB ports. This may be a combination of desktop or laptop computers as required. Connect a standard keyboard and mouse to the USB device ports on the KM Switch as shown below.

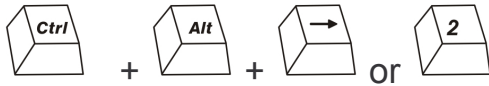


**Hot Key Switching via Keyboard**

Hold down “Ctrl” + “Alt” + “←” or “1” to select Left PC and release all keys.

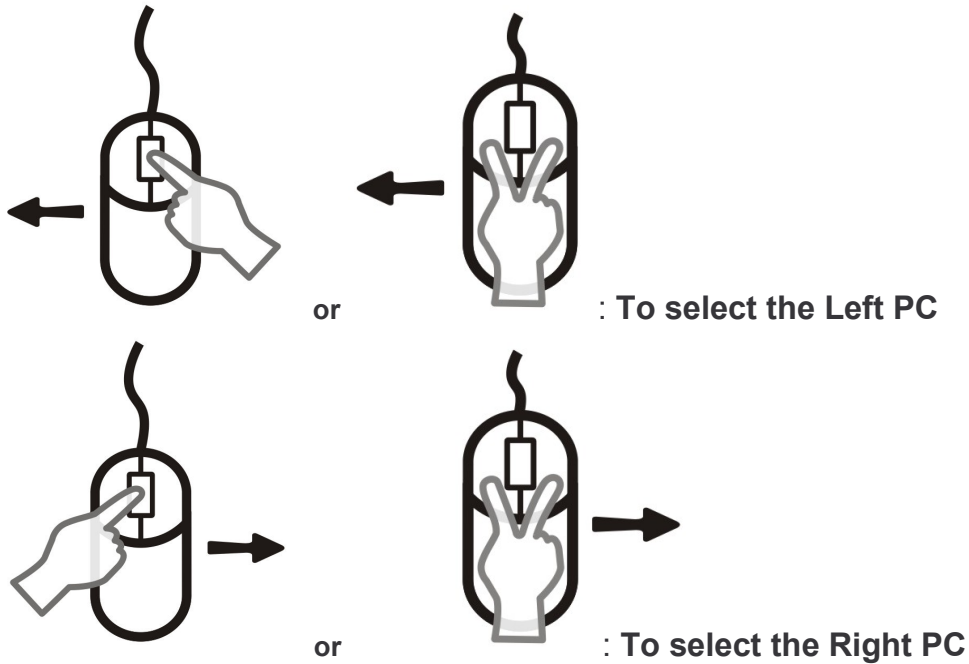


Hold down “Ctrl” + “Alt” + “→” or “2” to select Right PC and release all keys.



**Switching via Mouse Buttons**

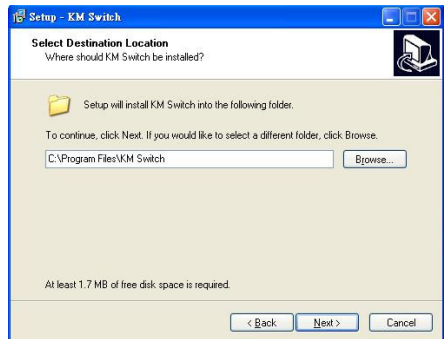
Hold down the mouse “Wheel” button or Left + Right buttons then move the mouse to Left or Right to switch computers.



## Software Installation

### Windows Operating Systems

1. Please insert the CD into your computer's CD-ROM or DVD drive.
2. When the Installation Wizard window appears, click next.
3. Please follow the process of Installation step by step.



4. When the following screen appears, click **Finish**.



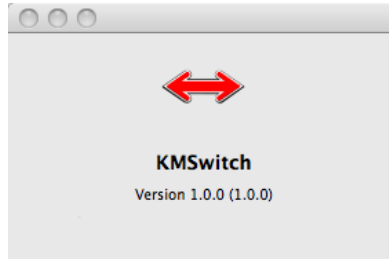
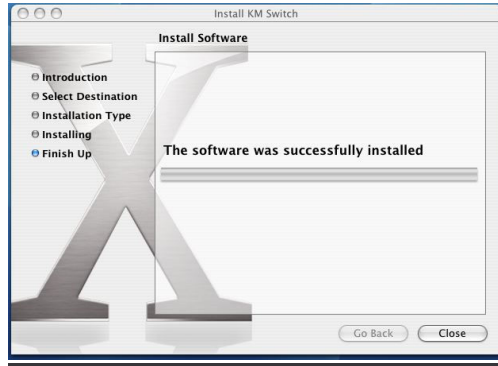
5. When the Installation is complete, a pop-up icon will appear in the task bar area as shown below. You can now use the cursor control software.



**Note:** The software must be installed for all connected computers before you can use a USB mouse to move the cursor seamlessly between your computers. You do not need to restart your computers after the software installation.

### Mac Operating Systems

1. Please insert the supplied CD into your computer's CD-ROM or DVD drive.
2. Navigate the CD and open the file "KMS\_Setup.pkg"
3. Please follow the process of Installation step by step.



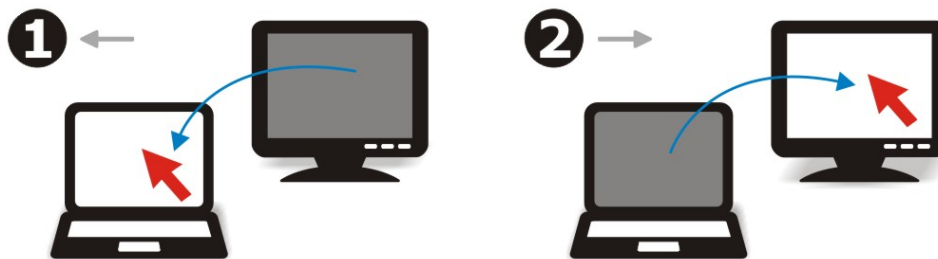
1. Once the software installation is complete an icon will appear in the dock as shown below and you can then use the KM Switch cursor control software.



**Note:** The software must be installed for all connected computers before you can use a USB mouse to move the cursor seamlessly between your computers. You do not need to restart your computers after the software installation.

### Switching via on screen cursor function

After installing the software you can easily switch control by simply moving the on screen cursor between the display screens.



### Auto-Detect Functions

The USB KM Switch is able to auto switch from one PC to the other whilst shutting down either of the connected computers.

**Troubleshooting**

1. The keyboard hot keys and mouse keys may conflict with one or more software applications or keyboard switching functions. If a conflict should occur then please disable or try to select a different switching function mode to operate correctly.
2. Some application software like "Vista's device manager, cpu-z" can manage keyboard and mouse movement during operation. This may cause the USB KM Switch on screen cursor control to reduce the moving efficiency. However the hot key and mouse keys function will still work correctly.
3. The USB KM Switch will automatically activate the Auto-Detect function during power up and initialisation of the computers operating system. Please wait until all computers have booted.
4. Before you start the OS (under the User's password entry mode), you may have to use the hot keys function to switch to the appropriate computer.
5. Non-standard keyboard and mice not supported by the USB KM Switch such as wireless gaming keyboards and mice.

.

## **CE/FCC/WEEE Statement**

---

### **Statement**

This device complies with the European Regulations for Electromagnetic Compatibility (EMC) of the European Union and it is equipped with the CE mark. This unit has to be used with high quality shielded connection cables. Only if such high quality shielded cables are used can you be sure that the EMC compatibility is not adversely influenced.

### **FCC Statement**

Shielded cables must be used with this equipment to maintain compliance with radio frequency energy emission regulations and ensure a suitably high level of immunity to electromagnetic disturbances.

### **FCC Warning**

This equipment has been tested and found to comply with the limits for a Class B Digital device, pursuant to part 15 of the FCC Rules. These limits are designed to provide reasonable protection against harmful interference in a residential installation. This equipment generates, uses, and can radiate radio frequency energy and, if not installed and used in accordance with the instructions, may cause harmful interference to radio communications. However, there is no guarantee that interference will not occur in a particular installation. If this equipment does cause harmful interference to radio or television reception, which can be determined by turning the equipment off and on, the user is encouraged to try to correct the interference by one or more of the following measures:

- Reorient or relocate the receiving antenna
- Increase the separation between the equipment and receiver
- Connect the equipment into an outlet on a circuit different from that to which the receiver is connected
- Consult the dealer or an experienced technician for help

You are cautioned that changes or modifications not expressly approved by the party responsible for compliance could void your authority to operate the equipment.



**WEEE (Waste of Electrical and Electronic Equipment),  
Recycling of Electronic Products**

### **United Kingdom**

In 2006 the European Union introduced regulations (WEEE) for the collection and recycling of all waste electrical and electronic equipment. It is no longer permitted to simply throw away electrical and electronic equipment. Instead, these products must enter the recycling process.

Each individual EU member state has implemented the WEEE regulations into national law in slightly different ways. Please follow your national law when you want to dispose of any electrical or electronic products.

**More details can be obtained from your national WEEE recycling agency.**

### **Germany / Deutschland**

Die Europäische Union hat mit der WEEE Richtlinie umfassende Regelungen für die Verschrottung und das Recycling von Elektro- und Elektronikprodukten geschaffen. Diese wurden von der Bundesregierung im Elektro- und Elektronikgerätegesetz – ElektroG in deutsches Recht umgesetzt.

Dieses Gesetz verbietet vom 24. März 2006 an das Entsorgen von entsprechenden, auch alten, Elektro- und Elektronikgeräten über die Hausmülltonne! Diese Geräte müssen den lokalen Sammelsystemen bzw. örtlichen Sammelstellen zugeführt werden! Dort werden sie kostenlos entgegen genommen. Die Kosten für den weiteren Recyclingprozess übernimmt die Gesamtheit der Gerätehersteller.

### **France**

En 2006, l'union Européenne a introduit la nouvelle réglementation (DEEE) pour le recyclage de tout équipement électrique et électronique.

Chaque Etat membre de l'Union Européenne a mis en application la nouvelle réglementation DEEE de manières légèrement différentes. Veuillez suivre le décret d'application correspondant à l'élimination des déchets électriques ou électroniques de votre pays.

### **Italy**

Nel 2006 l'unione europea ha introdotto regolamentazioni (WEEE) per la raccolta e il riciclo di apparecchi elettrici ed elettronici. Non è più consentito semplicemente gettare queste apparecchiature, devono essere riciclate.

Ogni stato membro dell' EU ha tramutato le direttive WEEE in leggi statali in varie misure. Fare riferimento alle leggi del proprio Stato quando si dispone di un apparecchio elettrico o elettronico.

Per ulteriori dettagli fare riferimento alla direttiva WEEE sul riciclaggio del proprio Stato.



No. 32162  
[www.lindy.com](http://www.lindy.com)

Dated 12.01.09